

Bac Lieu Wind Farm - Phase 1&2

Project Fact Sheet

© giz Viet Nam, 2016

Project Description

The Bac Lieu project is the largest wind farm in Vietnam, and operating under special conditions due to its location in a tidal area off the coast of Bac Lieu province.

The construction of the first phase of the wind farm started in July 2011 with 10 wind turbines. It was operational and connected to the grid in August 2013. The supplier of the turbines is General Electric. With the expansion into a second phase, the wind farm is now housing a total of 62 wind turbines adding up to an installed capacity of 99.2 MW. For 2018, a third phase is planned to extend the capacity of the wind farm to up to 142 MW.

To transmit the power to the national grid, approximately 18 km of 110 kV transmission lines were built. Spanning a project area of 1,000 ha, the wind farm has an estimated electricity output of 300 GWh per annum, purchased by EVN at a price of 9.8 US Cents/kWh. Approximately 150,331 tons of CO₂ emissions are expected to be offset annually.

The investment for the wind farm amounts to USD 260 million. The equity of USD 39 million is provided by Cong Ly Ltd Company, debt by the Vietnam Development Bank (VDB).

Project Location



The Bac Lieu wind farm is located in the coastal area of the Vinh Trach Dong commune, about 15 km away from Bac Lieu city. Most of the surrounding is used for shrimp farming and aquaculture. The average wind speed is about 6 metres per second at a height of 60 metres.

Geographical coordinates:

Northern latitude:
9° 12' 13" – 9° 14' 49"

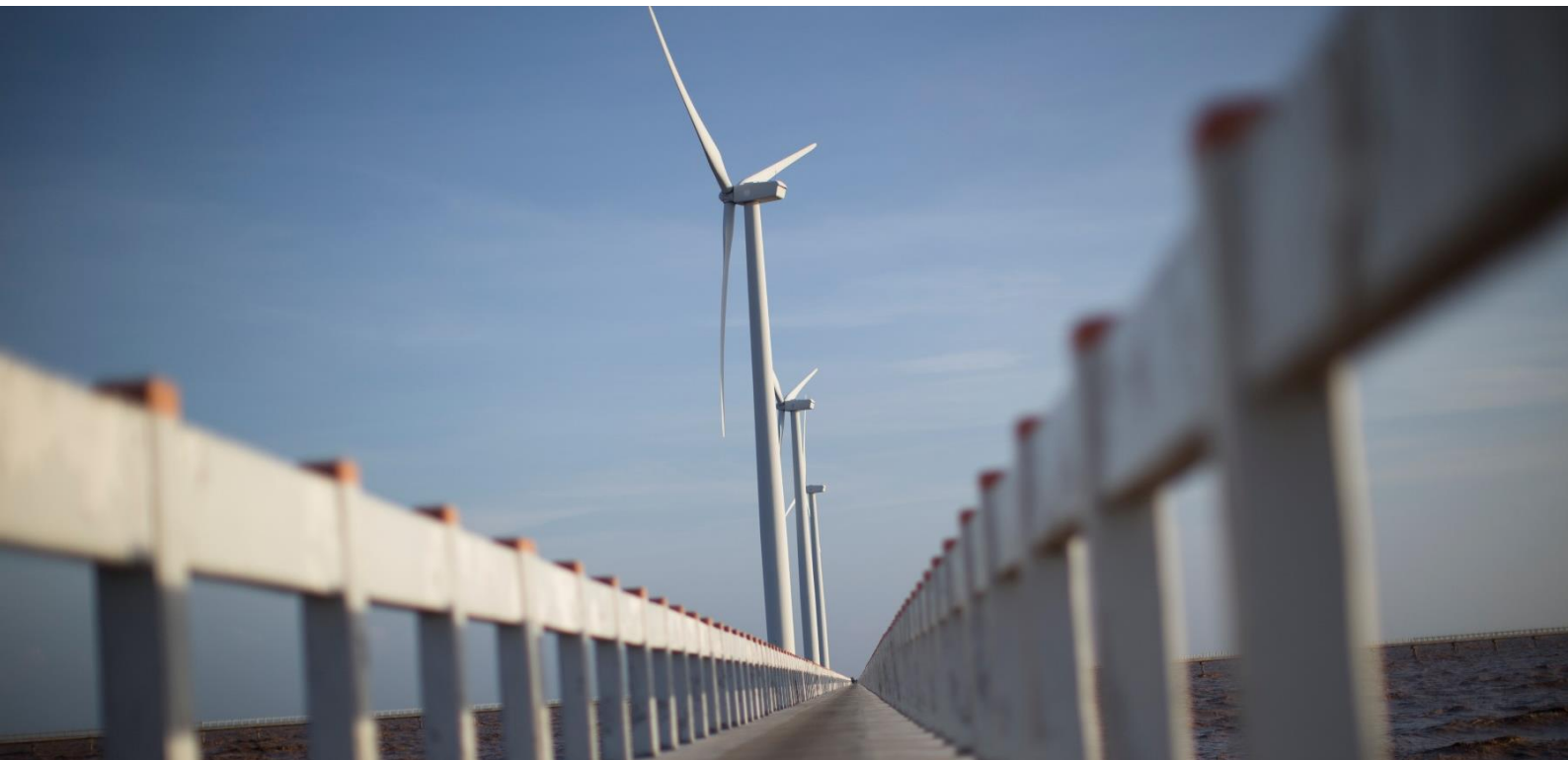
Eastern longitude:
105° 45' 32" – 105° 49' 35"

Project Key Facts

Location	Nearshore: Vinh Trach Dong commune, Bac Lieu city, Bac Lieu province
Project Developer	Cong Ly Ltd Company
Equity Investor	Cong Ly Ltd Company
Debt Investor	Vietnam Development Bank (VDB)
Total Investment (Debt/Equity ratio)	USD 260 million (85/15)
Engineering, Procurement, Construction (EPC)	Huy Hoang Transport and Logistics (HTL) with General Electrics (GE) and local contractors for BoP
Status	In operation

Technical Information

Manufacturer	General Electrics (GE), USA
Turbine type	GE 1.6 XLE (x62) – 1.620 MW
Total capacity	99.2 GW
Annual production	300 GWh
Hub height	86 m
Towers	CS Wind, Vietnam
Rotor diameter	82.5 m
Total height	127 m
Cut-in/cut-out wind speed	3.5 m/s – 25 m/s



Imprint

Published by the
Deutsche Gesellschaft für
Internationale Zusammenarbeit (GIZ) GmbH
Registered offices
Bonn and Eschborn, Germany

As at
April 2016

MOIT/GIZ Energy Support Programme
Unit 042A, 4th Floor, Coco Building
14 Thuy Khue, Tay Ho District
Hanoi, Vietnam
T + 84 4 39 41 26 05
F + 84 4 39 41 26 06
office.energy@giz.de
www.giz.de/viet-nam

Photo credits

GIZ
GIZ is responsible for the content of this publication.

On behalf of the

German Federal Ministry for Economic Cooperation and
Development (BMZ)